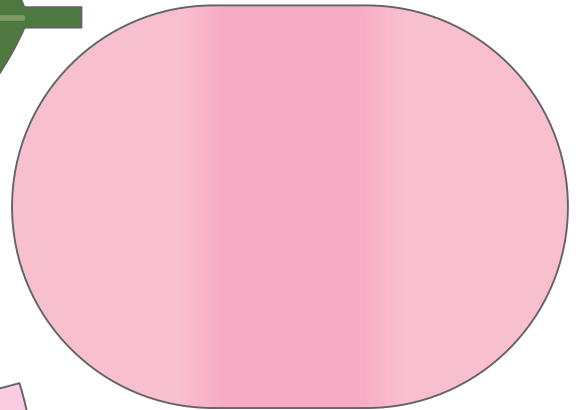
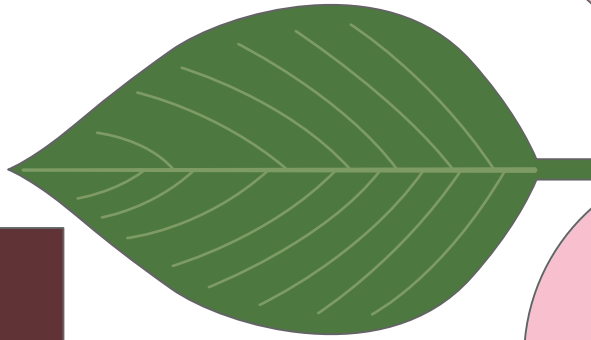
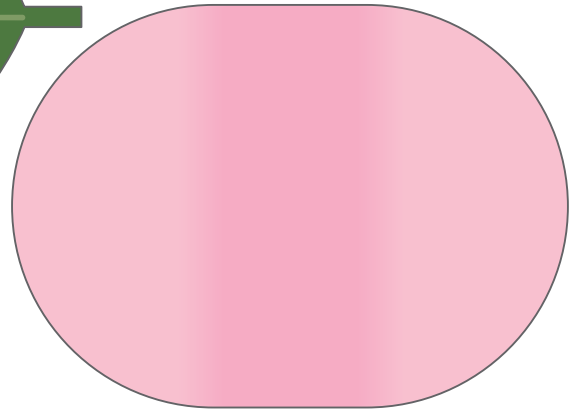
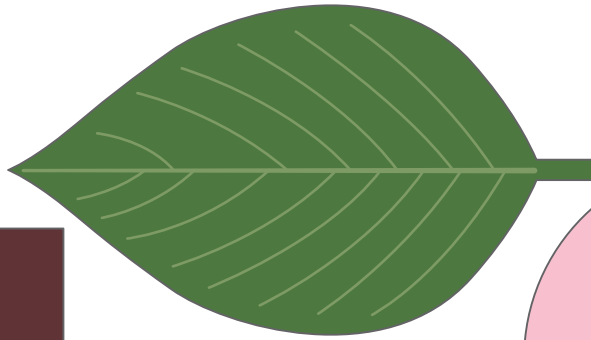
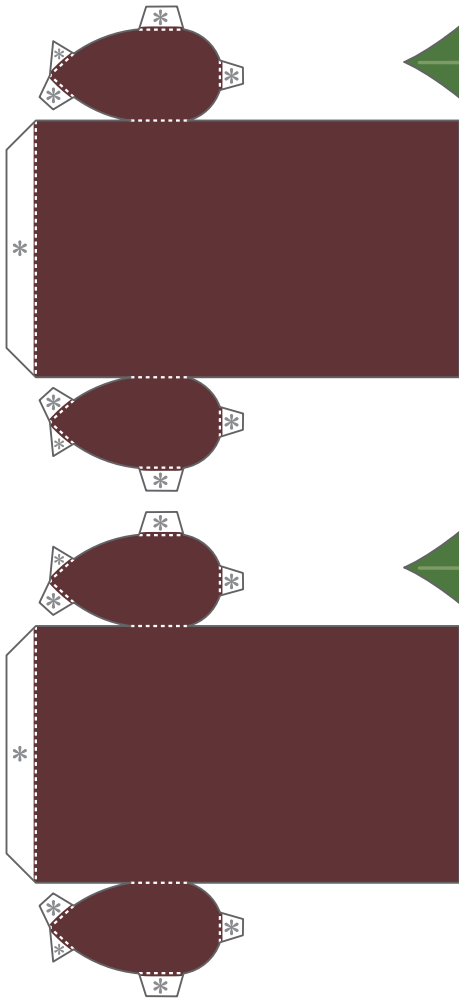
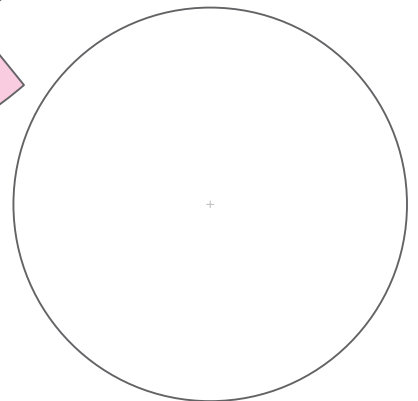
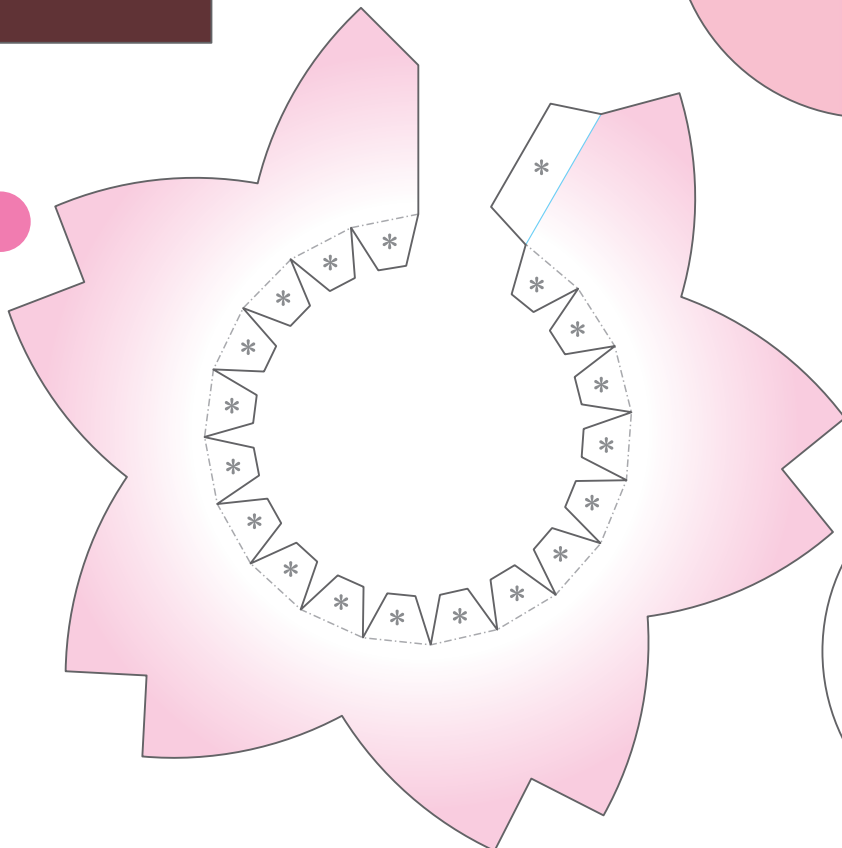


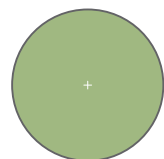
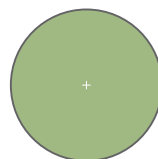
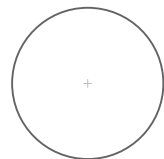
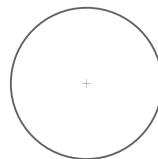
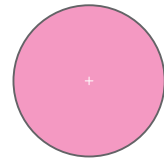
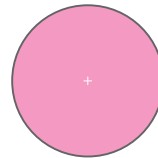
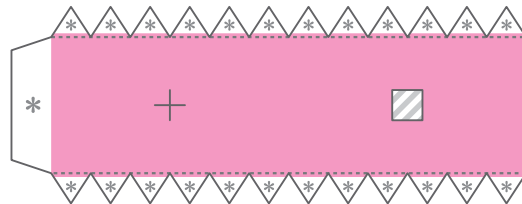
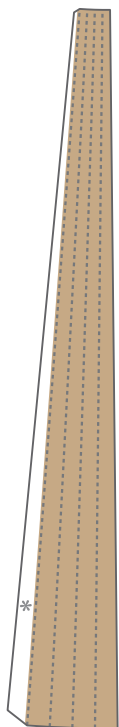
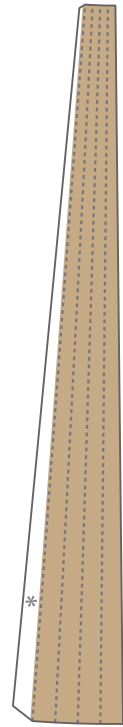
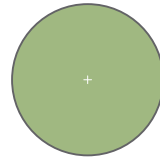
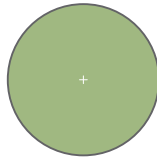
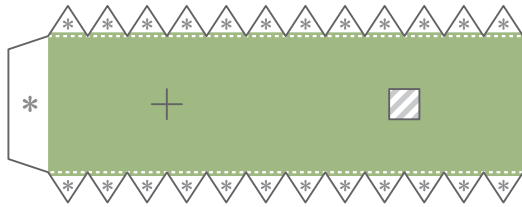
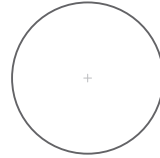
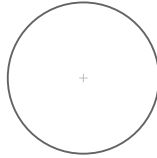
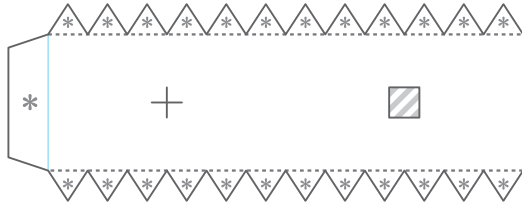
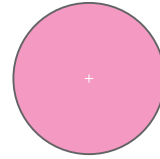
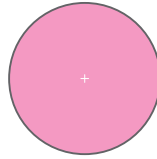
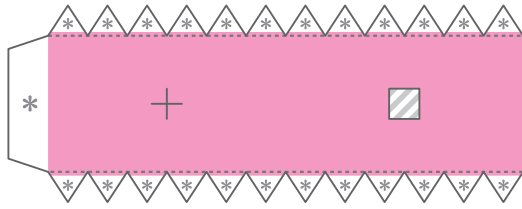
春の楽しみ 和菓子とのみもの ペーパークラフト

さくらもち × 2コ

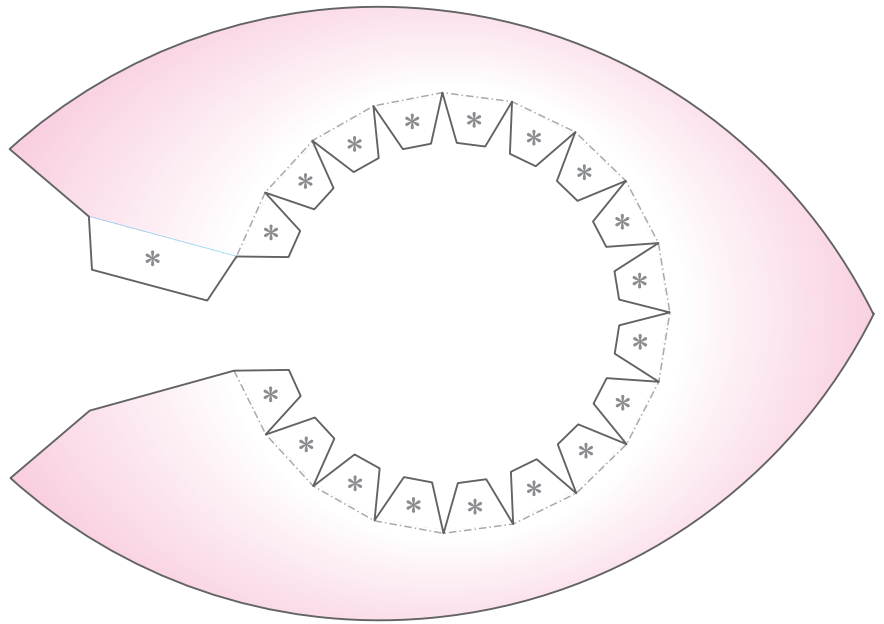
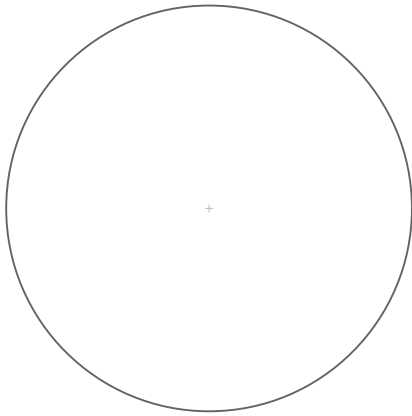


お皿

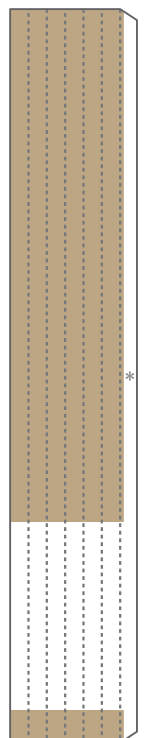
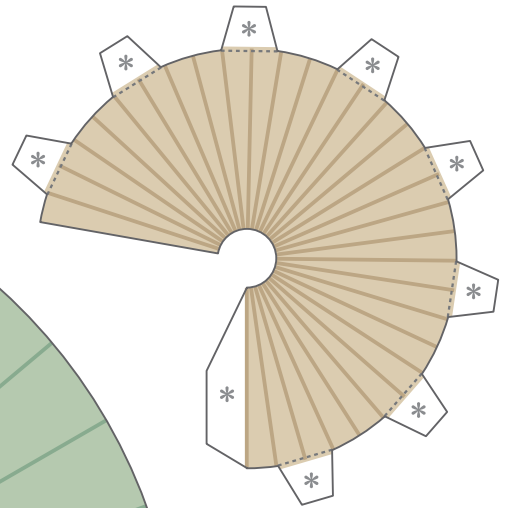
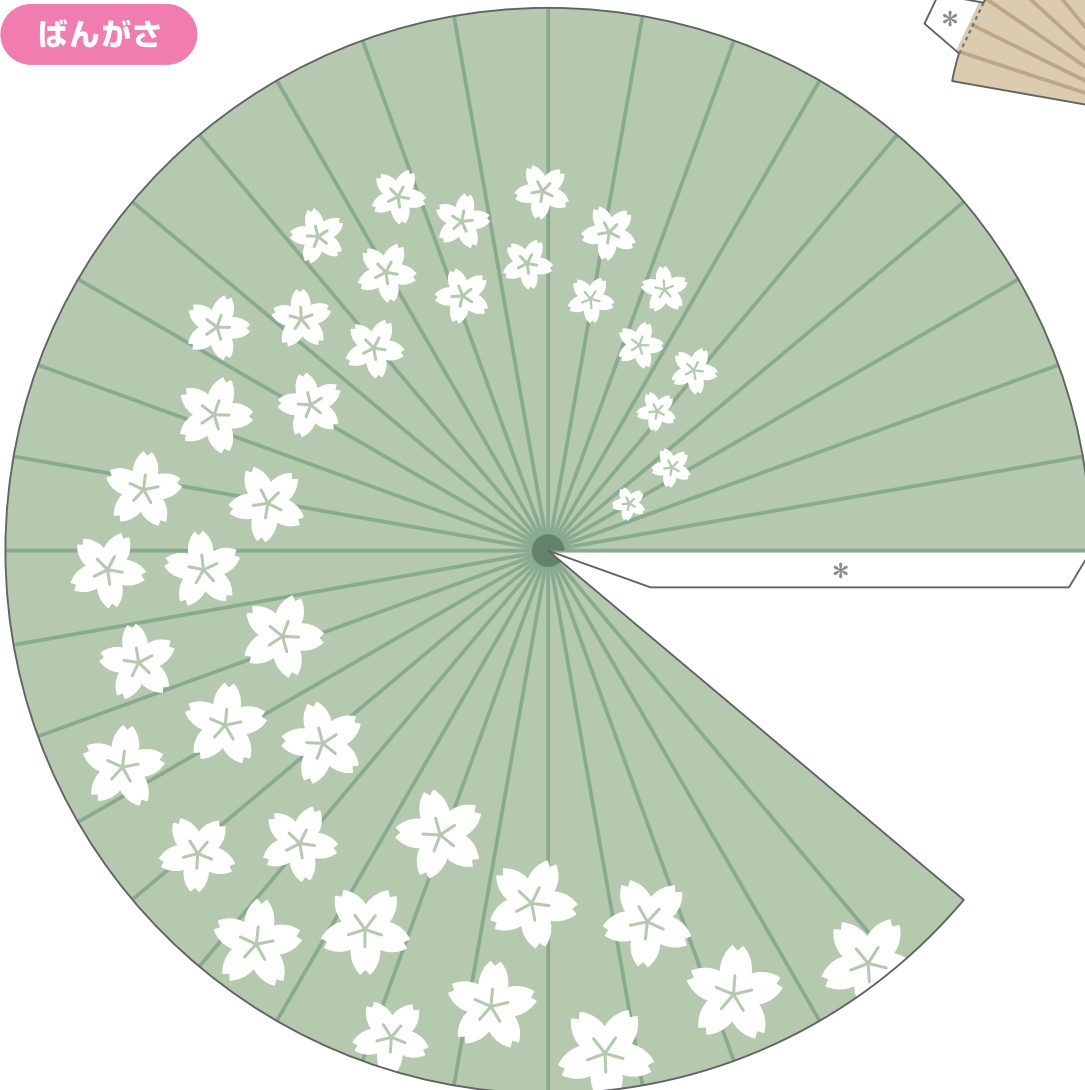




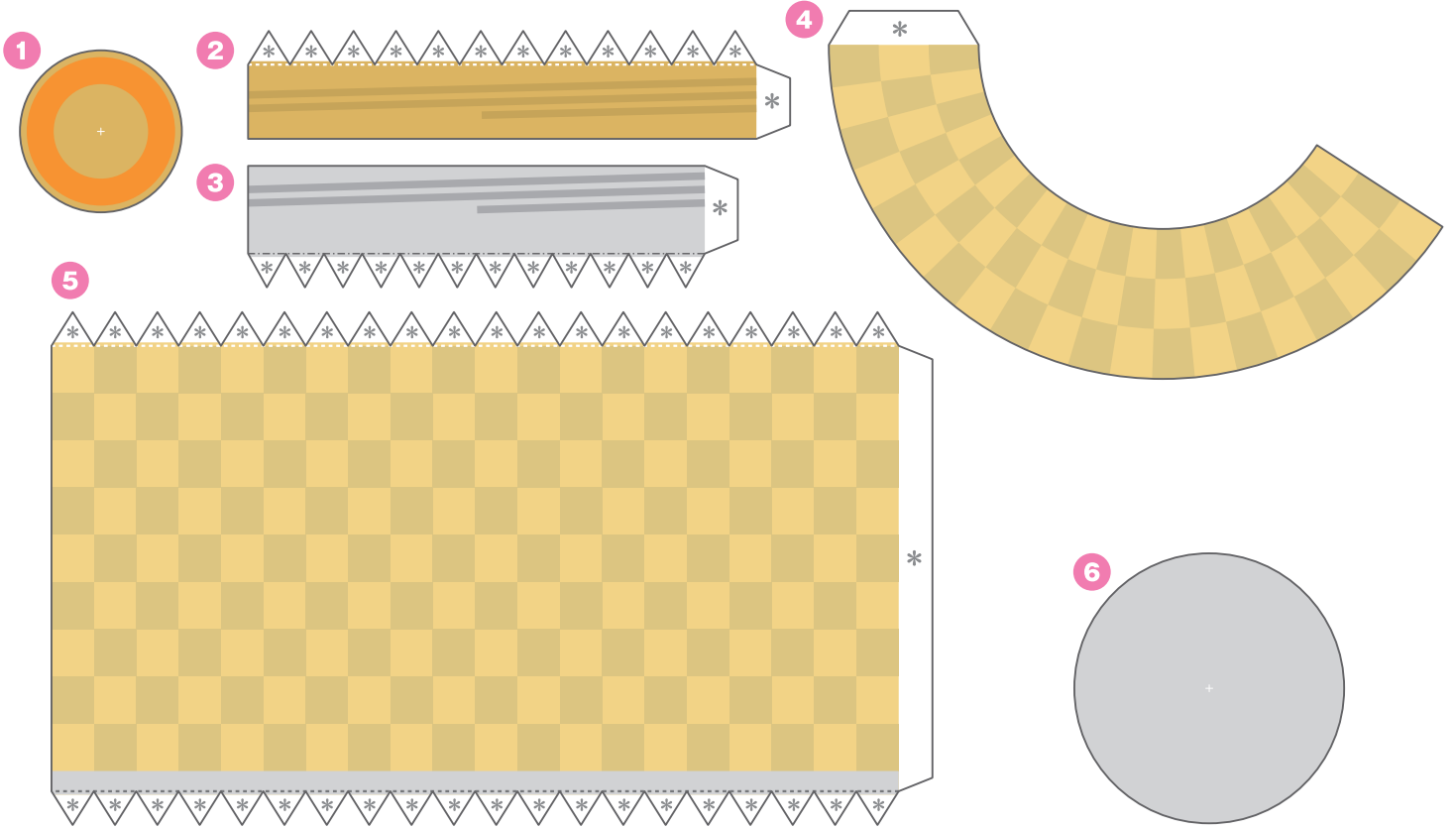
お皿



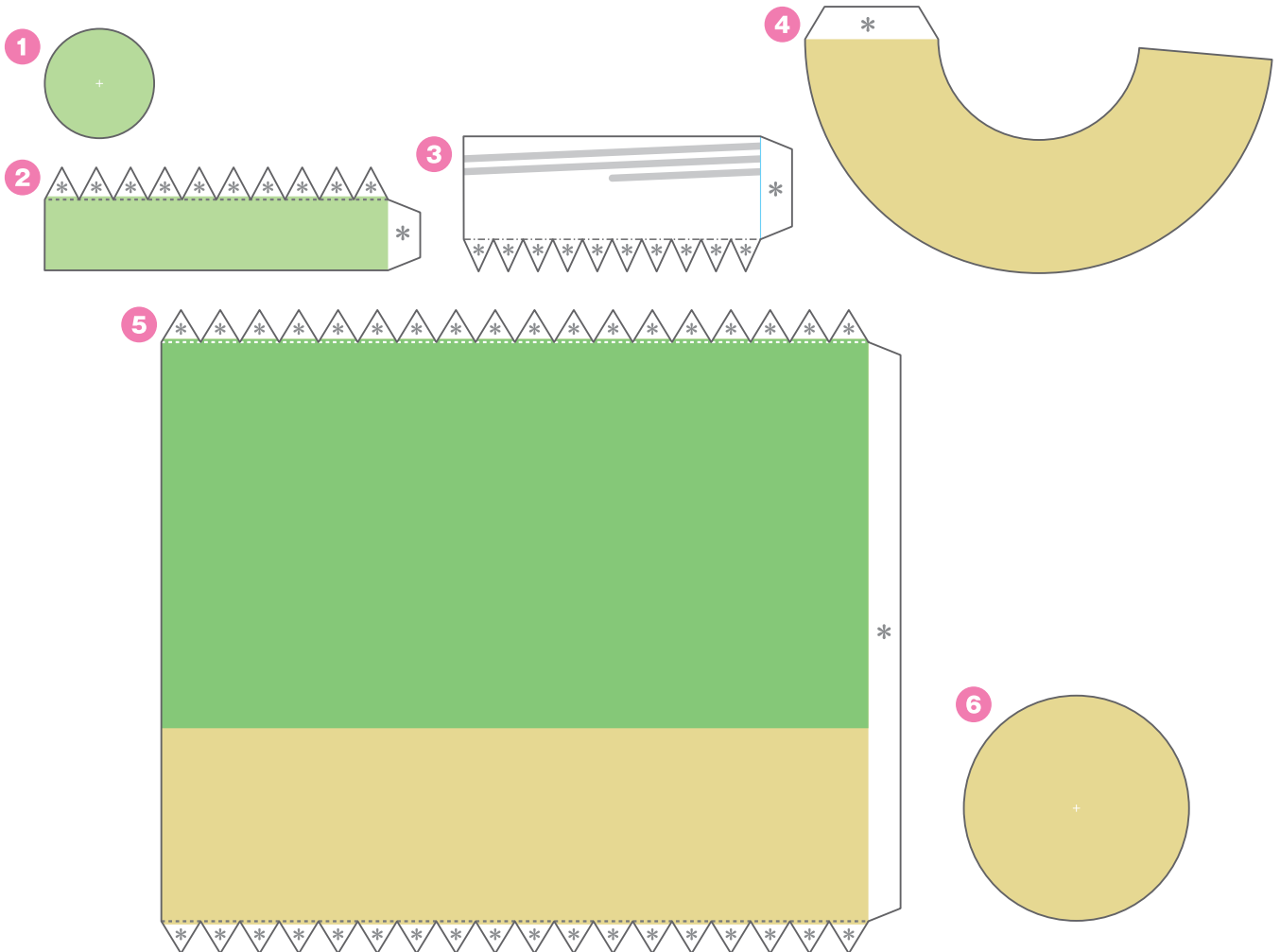
ばんがさ



のみもの1



のみもの2



【記号の説明】

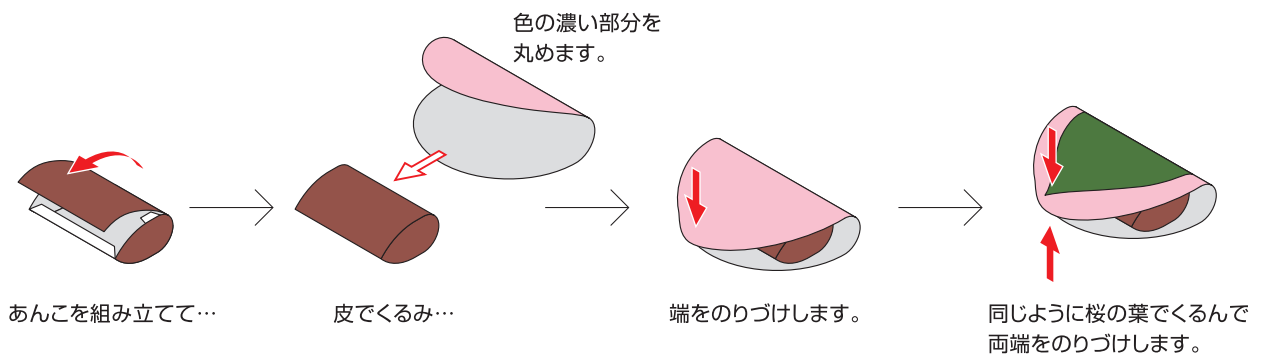
- 線は山折り ———— 線は、はりあわせのガイド
 - 線は谷折り [斜線] は、カッターで切り抜く
 - * 印はのりしろ
- 説明図の中の は のりづけ は 組み立ての向き／差し込み

- はさみやカッターで用紙をていねいに切り離そう。
最初はおおまかに切り、あとで細かいところを切ると切り抜きやすいよ。
- ☆ **注意!** 刃先は自分に向けないように注意してね。
- 折り線にもものさしをあてて、空になったボールペンで何度かなぞろう。
こうすると、キレイに折り曲げることができるよ。
- 型紙に手をあてて机の角でじごいたり、丸いペンに巻きつけると、
紙をきれいに丸めることができるよ。

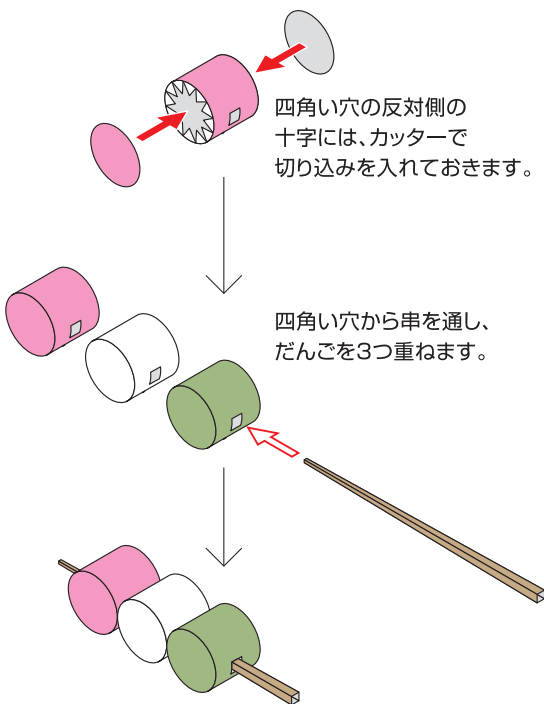


ペーパークラフトデザイン：坂 啓典 www.zuko.to/kobo/(紙工房)

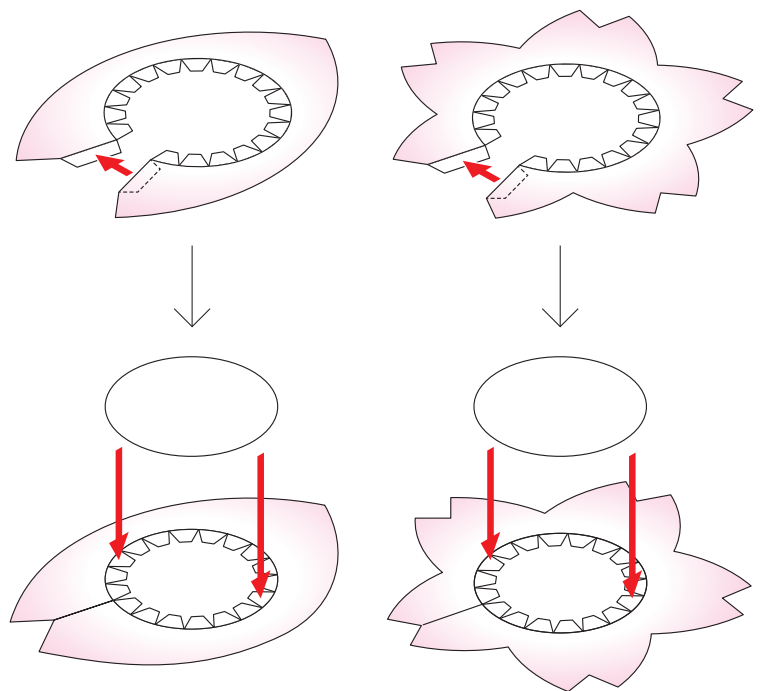
さくらもち



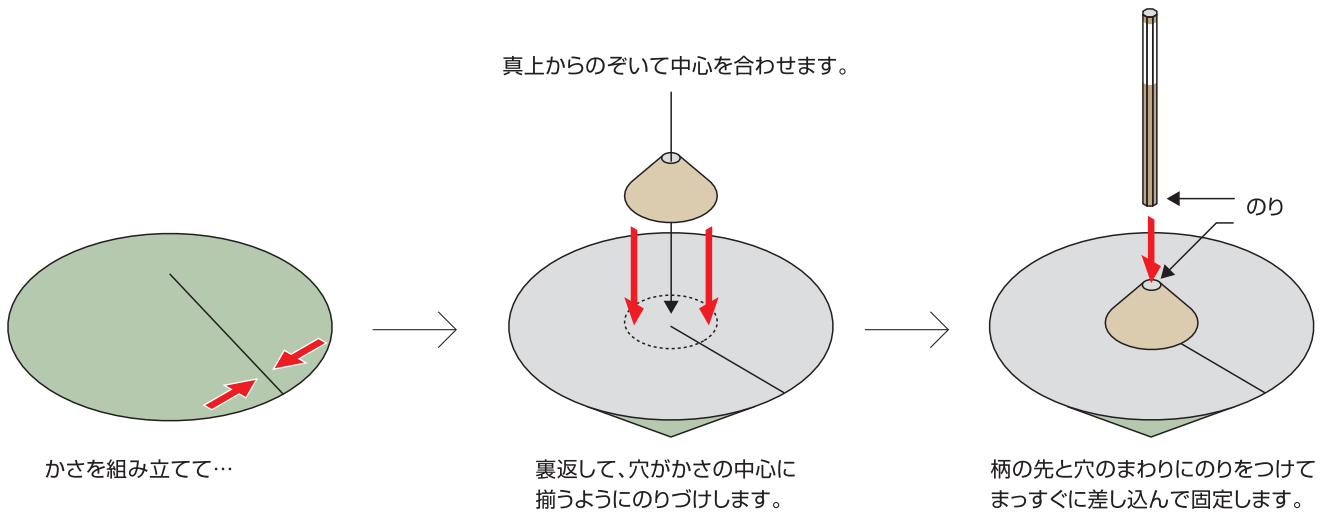
花見だんご



お皿



ばんがさ



のみもの

